

Beukelman & Mirenda (2013)

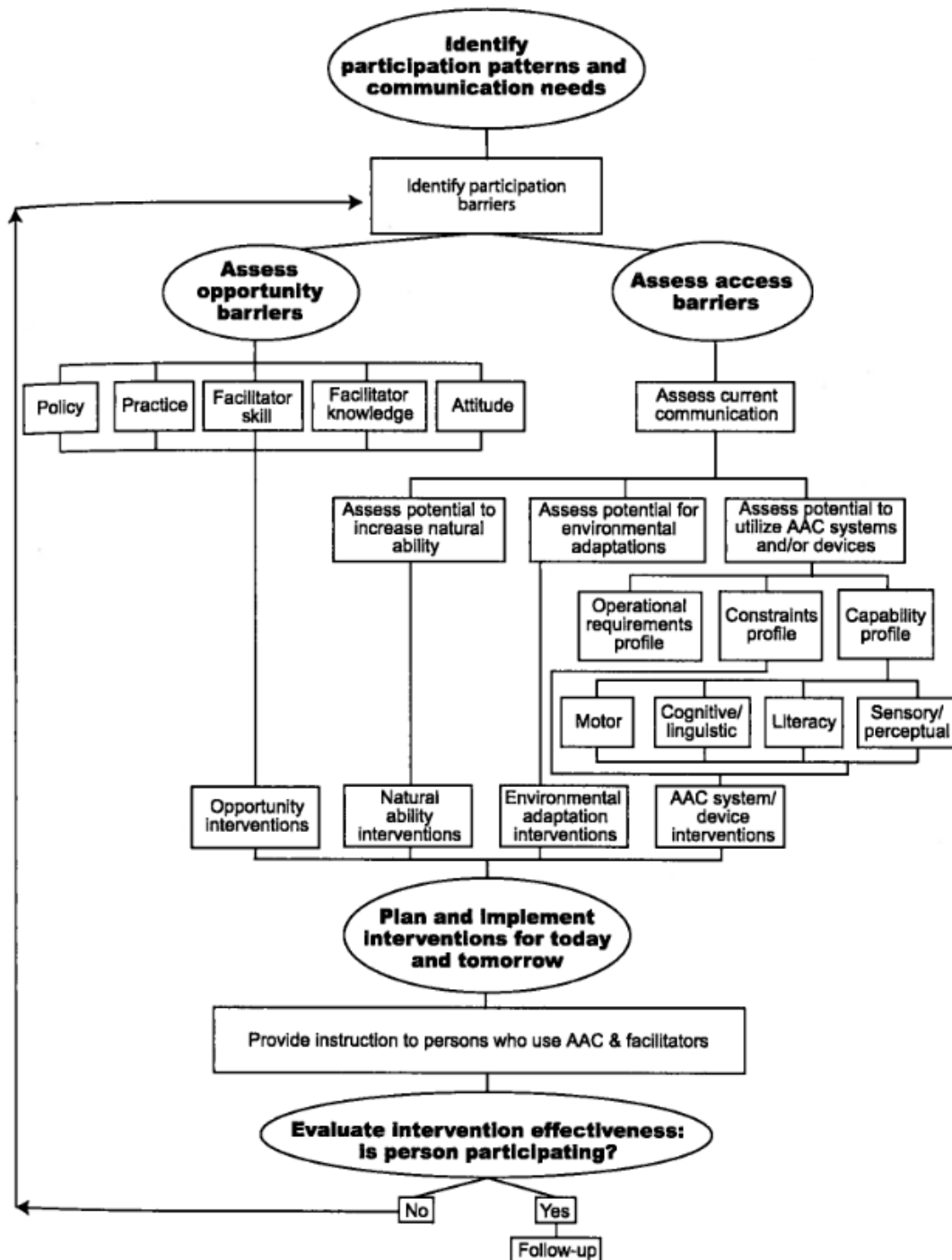


Figure 5.1. The Participation Model for augmentative and alternative communication (AAC).

Source: Beukelman, D. R., & Mirenda, P. (2013). *Augmentative and alternative communication: Supporting children and adults with complex communication needs*. Baltimore, MD: Brookes. Reprinted with permission.

Alternative Text for Participation Model Flowchart

1. Identify participation patterns and communication skills
2. Identify participation barriers
 - a. Assess opportunity barriers
 - i. Policy
 - ii. Practice
 - iii. Facilitator skill
 1. Opportunity interventions
 - iv. Facilitator knowledge
 - v. Attitude
 - b. Assess access barriers
 - i. Assess current communication
 1. Access potential to increase natural skill
 - a. Natural ability interventions
 2. Assess potential for environmental adaptations
 - a. Environmental adaptation interventions
 3. Assess potential to utilize AAC systems and/or devices
 - a. Operational requirements profile
 - b. Constraints profile
 - i. AAC system/device interventions
 - c. Capability profile
 - i. Motor
 1. AAC system/device interventions
 - ii. Cognitive/linguistic
 1. AAC system/device interventions
 - iii. Literacy
 1. AAC system/device interventions
 - iv. Sensory/perceptual
 1. AAC system/device interventions

The following items are gathered: Opportunity interventions, Natural ability interventions, Environmental interventions and AAC system/device interventions and lead to...

1. Plan and implement interventions for today and tomorrow
2. Provide instruction to persons who use AAC & facilitators
3. Evaluate interventions effectiveness: Is the person participating?
 - a. If no, go back to Identify participation barriers
 - b. If yes, follow-up